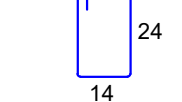
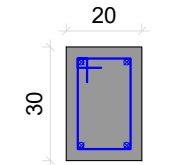


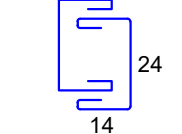
P20

SUPERIOR - L3

SEÇÃO
ESC 1:20



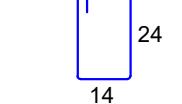
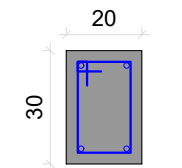
27 N7 ø5.0 C=87



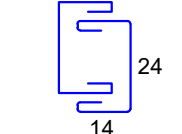
2x4 N8 ø5.0 C=64

TÉRREO - L2

SEÇÃO
ESC 1:20



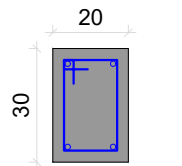
22 N7 ø5.0 C=87



2x4 N8 ø5.0 C=64

FUNDAÇÃO - L1

SEÇÃO
ESC 1:20



5 N7 ø5.0 C=87

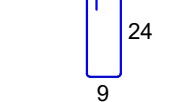
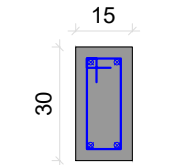


2x4 N8 ø5.0 C=64

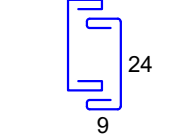
P21

SUPERIOR - L3

SEÇÃO
ESC 1:20



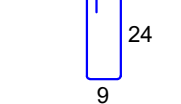
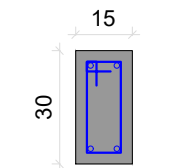
27 N12 ø5.0 C=77



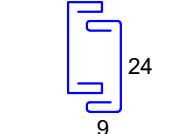
2x4 N13 ø5.0 C=54

TÉRREO - L2

SEÇÃO
ESC 1:20



21 N12 ø5.0 C=77



2x5 N13 ø5.0 C=54

PROJETO ESTRUTURAL

AILTON CALEGARIO

email: eng.ailton.calegario@gmail.com
Tel: (32)99954-8179

PROPRIETÁRIA:

PREFEITURA MUNICIPAL DE SÃO JOÃO NEPOMUCENO

RESPONSÁVEL TÉCNICO:

AILTON CALEGARIO CLEMENTE - ENG. CIVIL
CREA/MG: 240176/D

Desenho: LOCAÇÃO DAS FUNDAÇÕES

Escala: INDICADA

Data: 15/10/2025

Revisão: 0

Unidade: cm

DESENHO

01

FOLHA

15/19